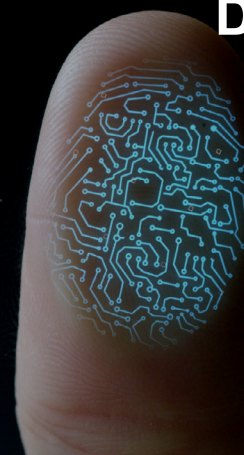


# Essential Eight Adoption Roadmap



## The Essential Eight can mitigate up to 85% of data breaches<sup>1</sup>

Today's organisations generate an immense volume of data, operate in an increasingly mobile environment, and are becoming overwhelmingly dependent on cloud services. As digital transformation explodes, cybersecurity risks have exponentially increased.

Implementing systems that minimise the impact of cyber incidents is crucial, but how do you know where your vulnerabilities lie, and what to prioritise? The Australian Signals Directorate (ASD) recommends eight essential strategies to prevent malware delivery, limit the impact of attacks and improve recovery. Using the ASD recommendations as a framework, Data#3 has built the Essential Eight Adoption Roadmap to help organisations understand and improve their security posture.

**Learn how to leverage your existing Microsoft investment to execute an Essential Eight security strategy.**

### Are you struggling with:

- Understanding your security posture?
- Identifying vulnerabilities and optimising your environment for the best defence?
- Building a cybersecurity strategy?
- Measuring the effort and cost it takes to execute a sound security strategy?
- Ensuring your organisation is compliant with government and industry standards?
- A lack of integration in your security stack, creating potential gaps in your defence?

**You need an Essential Eight Adoption Roadmap.**

## Understanding your security posture

We have found that:

- It can be hard to find direction and know what good looks like when building a security strategy.
- As an insider, it can be difficult to assess your environment objectively in order to identify risks.
- With limited time and resources, knowing where to begin and what to prioritise when building and implementing a security strategy can be challenging.
- Threats are constantly changing; it's hard to keep up. In fact, 70% of today's malware is customised to the targeted organisation<sup>2</sup>.

**Do you know your weakest links?**

## Over-engineering - Simplicity is the ultimate sophistication

We have found that:

- Many businesses have adopted 'productised' security solutions that can be incomplete, leaving gaps in your security stack.
- Security is managed across many products, and complex IT environments lack the integration to ensure your organisation is completely secure.
- With so many systems to monitor, it's hard to notice the red flags amongst the many notifications in order to promptly remediate issues.

**How many security solutions are you managing?**

# Essential Eight Adoption Roadmap

## Costs and consequences of poor security

We have found that:

- Customers without a standardised approach to security have a higher risk of attack, increased impact of attack and slower recovery.
- On average, it takes 281 days for an Australian organisation to identify and contain a breach<sup>3</sup>.
- Breaches can incur financial and legal penalties for non-compliance. The average cost of an Australian data breach is \$2.13 million<sup>3</sup>.
- Compromised credentials account for 74% of data breaches, according to the Notifiable Data Breaches Scheme<sup>4</sup>.

**What is the status quo costing you?**

***“The Essential Eight strategies will help protect organisations from credentials theft, ransomware, insider threat and targeted attacks.”***

**Richard Dornhart**

National Practice Manager Security, Data#3

## What is an Essential Eight Adoption Roadmap?

The Essential Eight Adoption Roadmap is a 5-day engagement, conducted by a Data#3 Information Assurance Specialist, including up to 2 days spent onsite with the customer. The audit will help you understand your current security maturity and defensive posture, in alignment with the ASD Essential Eight.

The engagement will begin with a discovery session to understand your business, technology environment and key objectives. Technical workshops will follow, focusing on application whitelisting, patching applications, patching operating systems, multi-factor authentication, managing administrator rights, daily backups, managing Microsoft Office macros and application hardening.

The Data#3 Information Assurance Specialist will gather data and analyse each of the above factors. Detailed findings will be compiled into a report providing evidence of your current security state, as well as expert recommendations for optimisation. A high-level roadmap will be shared outlining the projects to be undertaken, indicative costs, timelines and the recommended software, hardware and services required. The report will be shared with you for review, followed by a presentation lead by the assessor to discuss your results in-depth.

**An Essential Eight Adoption Roadmap will guide you in risk and cost reduction, by providing specific, actionable recommendations leveraging your existing investment in the Microsoft Security portfolio.**

## Mature your cybersecurity practices

- Gain clear insight into your defensive posture and best practice advice for an integrated, Microsoft-based security platform.
- Understand which tools, technical controls, business systems and people processes to implement in order to mature your cybersecurity practices.
- Be confident that your organisation is protected using widely accepted mitigation strategies.
- Improve your cybersecurity policies and procedures, including the governance of information systems throughout the enterprise.

# Essential Eight Adoption Roadmap

## Improve budget allocation

- Standardise on one integrated platform, understand its full functionality, simplify your security stack and get better use of your currently investments.
- Eliminate the unnecessary costs of point products that often overlap in functionality.
- Simplify your team's training and product knowledge requirements.
- Increase efficiency and save valuable IT time and resources, with less systems to manage, fewer risks, faster detection of threats and enhanced ability to action remediation and recover quickly.

## Manage compliance

- Discover and identify your gaps and overlaps, and learn how to secure them with administrative and technical controls.
- Ensure conformance with business and industry information security requirements leveraging the wealth of proactive controls in the Microsoft platform.
- Assist in achieving compliance with industry standards such as ISO27001, NIST and PCI.

## Secure the modern workplace with Microsoft

The Essential Eight Adoption Roadmap will provide insightful and actionable information regardless of your security strategy or vendor mix. However, many controls needed to make an immediate difference and improve your cybersecurity posture are already available via many customer's existing Microsoft investments. By leveraging the Microsoft security portfolio across threat protection, information protection, compliance and identity and access management, you can achieve the desired results and reduce complexity in your environment.

## Why choose Data#3?

Combining the experience of a dedicated strategic consulting team, as well as hands-on cybersecurity specialists, Data#3 has one of the most mature and highly accredited security teams in Australia. Leveraging a breadth of security solutions and a strong vendor portfolio Data#3 can help you design, implement and maintain superior security measures, tailor-made to protect your business. Having conducted countless security assessments, we have developed a proven model to strengthen resilience, incident response and recovery.

As Microsoft's largest Australian partner, and a Microsoft Gold Security partner Data#3's expert team are globally recognised as leaders in securing your environment with the Microsoft Security portfolio.

## Next Steps

- **Download the eBook [The ASD Essential Eight Explained](#)** to learn more about the strategic controls.
- **Download a sample report** of an Essential Eight Adoption Roadmap.
- Speak your Account Manager, or **[contact us here](#)** to **book an Essential Eight Adoption Roadmap**.

<sup>1</sup> The Essential Eight expand upon the 'Top 4' mitigation strategies, part of the Australian government's Protective Security Policy Framework. [The Australian Signals Directorate](#) have stated that implementing the Top 4 mitigation strategies can prevent up to 85% of unauthorised intrusions.

<sup>2</sup> Rainey, Larry B. (September 3, 2018) Engineering Emergence: A Modeling and Simulation Approach. [Online] Available at: [https://books.google.com.au/books?id=DQlpDwAAQBAJ&printsec=frontcover&source=gbs\\_ge\\_summary\\_r&cad=0#v=onepage&q&f=false](https://books.google.com.au/books?id=DQlpDwAAQBAJ&printsec=frontcover&source=gbs_ge_summary_r&cad=0#v=onepage&q&f=false)

<sup>3</sup> IBM Security. (2019) Cost of a Data Breach Report. [Online] Available at: <https://databreachcalculator.mybluemix.net/executive-summary/>

<sup>4</sup> Office of the Australian Information Commissioner. (February 28, 2020) Notifiable Data Breaches Report July – December 2019. [Online] Available at: <https://www.oaic.gov.au/privacy/notifiable-data-breaches/notifiable-data-breaches-statistics/notifiable-data-breaches-report-july-december-2019/>

## Interested in how Data#3 can help?

📞 **phone** 1300 23 28 23

🌐 **website** [www.data3.com.au](http://www.data3.com.au)

📘 **facebook** [facebook.com/data3limited](https://facebook.com/data3limited)

🐦 **twitter** [twitter.com/data3limited](https://twitter.com/data3limited)

🌐 **linkedin** [linkedin.com/company/data3](https://linkedin.com/company/data3)

📺 **youtube** [youtube.com/data3limited](https://youtube.com/data3limited)